

**BALU**[®]

A BEAR OF A GATE



Width: up to 15 m
Height: up to 2.5 m
(Special versions widths
up to 15 m and heights up to 5 m)

SWING GATE BALU CLASSIC

Production of the highest standard

The first-class workmanship gives BALU Classic swing gates outstanding stability and thus optimum protection for a property. The self-supporting welded construction of BALU Classic swing gates can be manufactured in standard sizes as well as custom-made. The proven hinges allow each BALU Classic swing gate to “float” almost ILENT. The well-proven slot system in the shapely holding post enables stepless height adjustment when mounting the swing gates, and manual gates are supplied with a lock specially made for swing gates. There is one automation variant each available in underfloor design or as a body drive. In addition to the high-quality workmanship, the appealing design forms the basis of the BALU Classic swing gates. The easy-care, scratch-resistant and weather-resistant powder coating of the swing gates preserves the beautiful look for many years.



Special frame according to statics for oversizes and over heights

All turnmotors are delivered optionally for on-site assembly or partially pre-wired and assembled.

Drive model BALU CB 30/50 – construction drive

Comfortable design drive in 24-V technology for single and double leaf swing gates from 2 - 5 m gate width (double leaf up to 10 m). The electromechanical spindle drive works reliably. The internal spindle and the bottom runner are protected against the weather, which extends the maintenance intervals.

The comfort control is housed in a shapely, weather-resistant housing. The motors are connected to the control in 3-wire technology. The gate is constantly monitored with encoder technology, thus optimally controlling the soft phases. Photoelectric sensor and flashing light, as well as connection options for various command devices, are available as standard.

On request, this drive system is also available with an emergency battery.



Drive model BALU CB 35 – underground motor

Comfortable underfloor drive in 24-V technology for single and double-leaf swing gates up to 3.5 m gate width (double-leaf up to 7 m).

The electromechanical geared motor works reliably and is installed “almost invisibly” in a built-in box in the floor without affecting the appearance of the gate.

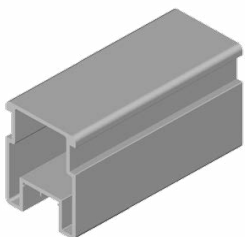
The comfort control is housed in a shapely, weather-resistant housing.

The motors are connected to the controller in 3-wire technology.

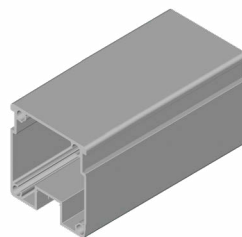
Photoelectric sensor and flashing light, as well as connection options for various command devices, are available as standard.



Technical specifications:



BALU Classic swing gates
up to 5 m wing width
and 2.5 m height
Frame HST10, 80/60



BALU Classic swing gates special manual
over 5 m wing width
and over 2.5 m in height
Frame HST9, 100/100

